

NORDA BETA

NEAR REAL-TIME DATA ACCESS

FUTURE DEVELOPMENTS

September 2023



Scottish & Southern
Electricity Networks

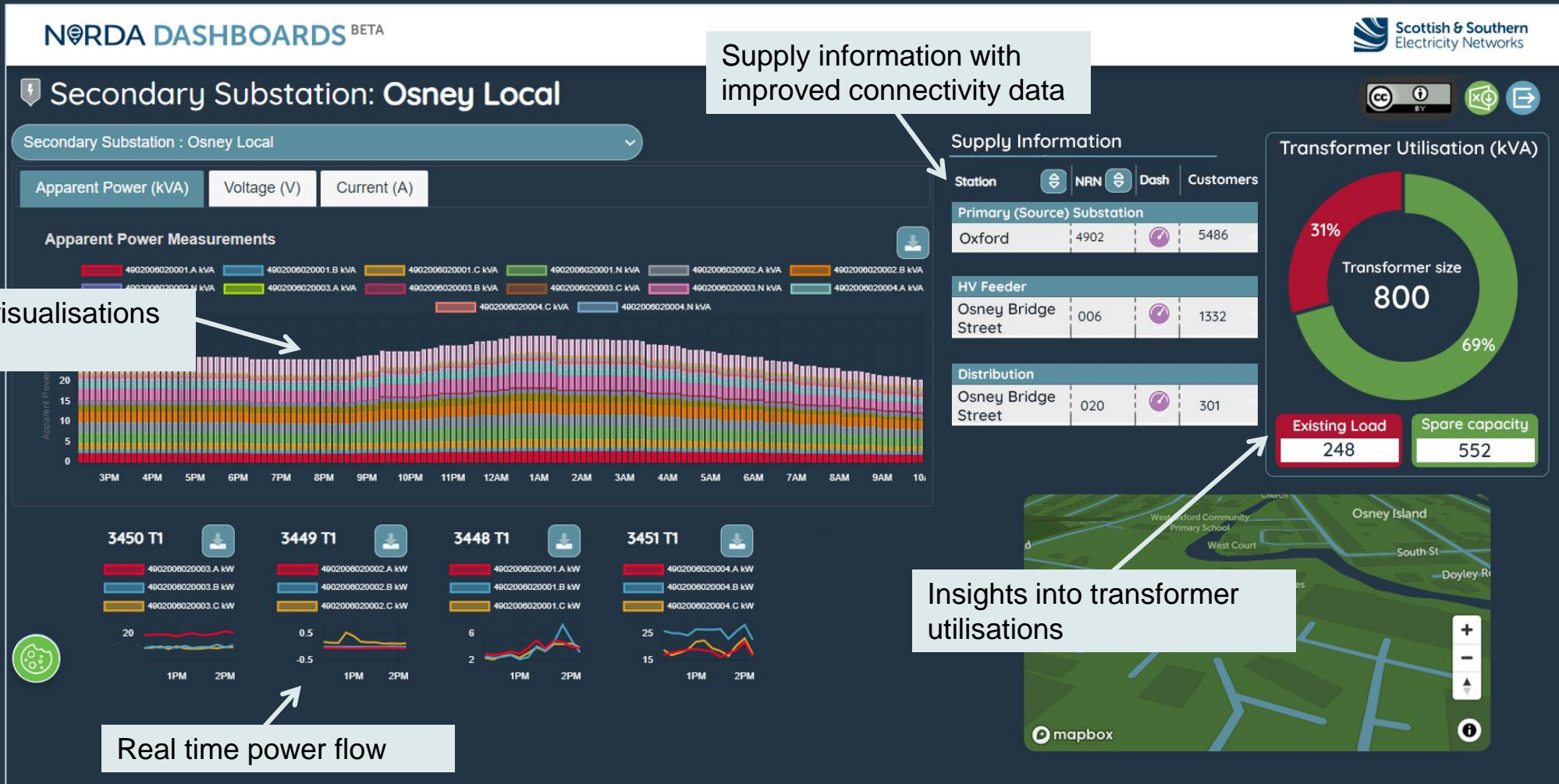


NeRDA : Future Developments

Through stakeholder feedback we will be further developing NeRDA to provide enhanced functionality and user experience. Here are some of the planned improvements.

- Incorporating transformer ratings, demand and capacity so users can better visualise transformer utilisation (*see the next slide for a visual example*)
- Including near real-time data from all our LV monitoring devices in our secondary transformers
- Including our load model data for all secondary transformers that do not have LV monitors installed
- Ability search and navigate our electrical assets through an improved connectivity model, from GSP/BSP through to secondary transformers.
- Improved labelling of assets, and user display messages i.e. where data is loading or is not currently available.

NeRDA : Future Developments



CONTACT AND LINKS



NeRDA Portal:
nerda.opengrid.com



For general enquiries and API access please contact:
SSENSmart@sse.com



NeRDA page on SSEN website:
ssen.co.uk/our-services/tools-and-maps/nerda-portal



Scottish & Southern
Electricity Networks