

CENTRAL BRIDGE STATION UPGRADE

POWERING THE MOVE TO NET ZERO

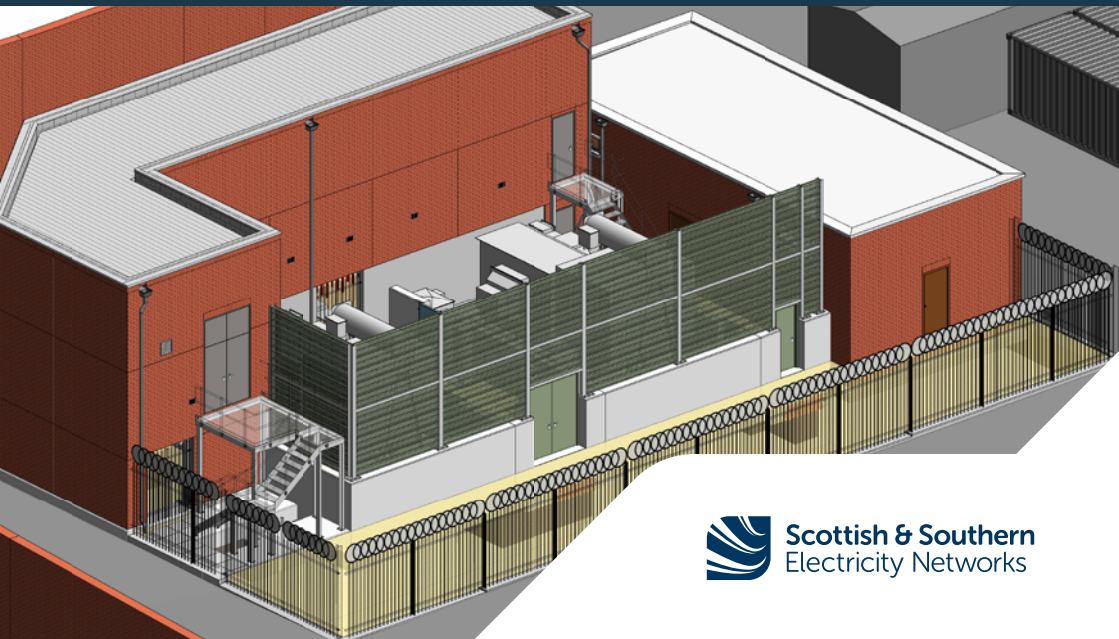
YOUR AREA'S IMPROVEMENTS

With your essential substation nearing the end of its lifespan, and with the site increasingly at risk from flood damage, SSEN are taking the opportunity to upgrade and make it future-ready. This means preparing it to meet the increasing demand for electricity, and the low-carbon technologies that are coming. Here are just a few of the benefits:

- **Mitigating flood damage**
- **Modernising for renewables technology**
- **Protecting and boosting the local economy**
- **Improving substation looks**

There are no Planned Supply Interruptions (PSIs). But if you are concerned about vulnerability during a power cut, check if you are eligible to join our Priority Services Register to help you cope with power cuts [ssen.co.uk/psr](https://www.ssen.co.uk/psr)

**POWER CUT?
CALL 105**



FUTUREPROOFING THE LOCAL ELECTRICITY NETWORK

Powering the move to net zero



Southampton's Central Bridge substation helps bring power to thousands of businesses, homes and public services in your area, and it's getting an upgrade.

SSEN's £8 million investment will increase network resilience, boost capacity, and help future-proof your local electricity network. There are many benefits, but how we reach them is just as important. Working with the community, our priority is to deliver them safely, quickly, and with minimal disruption.

As part of SSEN's investment of over £60m in the Southampton area, we are:



Supporting the transition to Net Zero



Meeting increased energy demands



Building a more resilient future

Find out more, and have your say



We want to hear your views, so please email LCD@sse.com



Or learn more by scanning the QR to go to ssen.co.uk/central-bridge

